

# Regional Conservation Partnerships (RCPs): The New Face of Conservation in New England

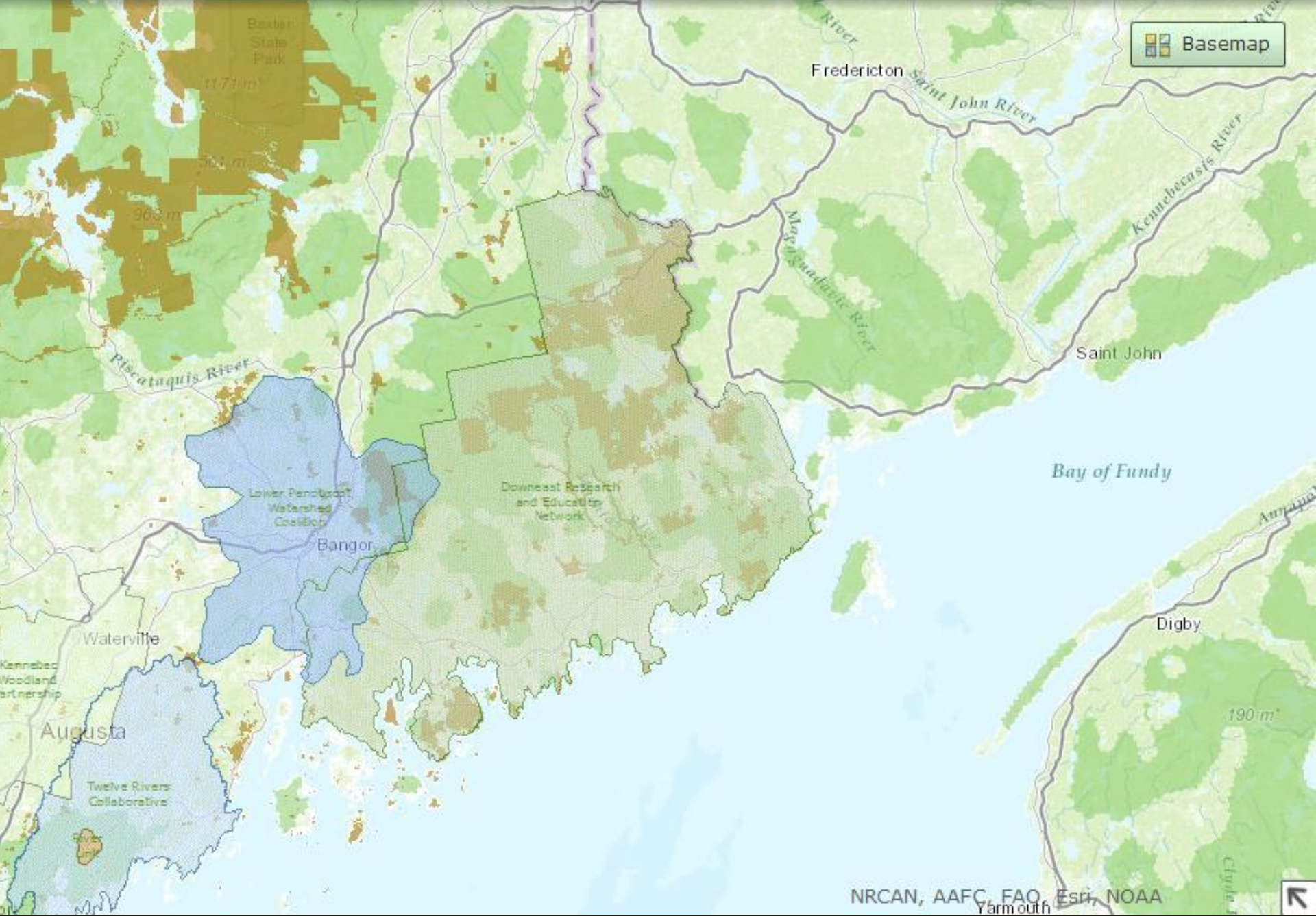
**Presented by Bill Labich,  
Highstead**

***CONVERGENCE 2013***

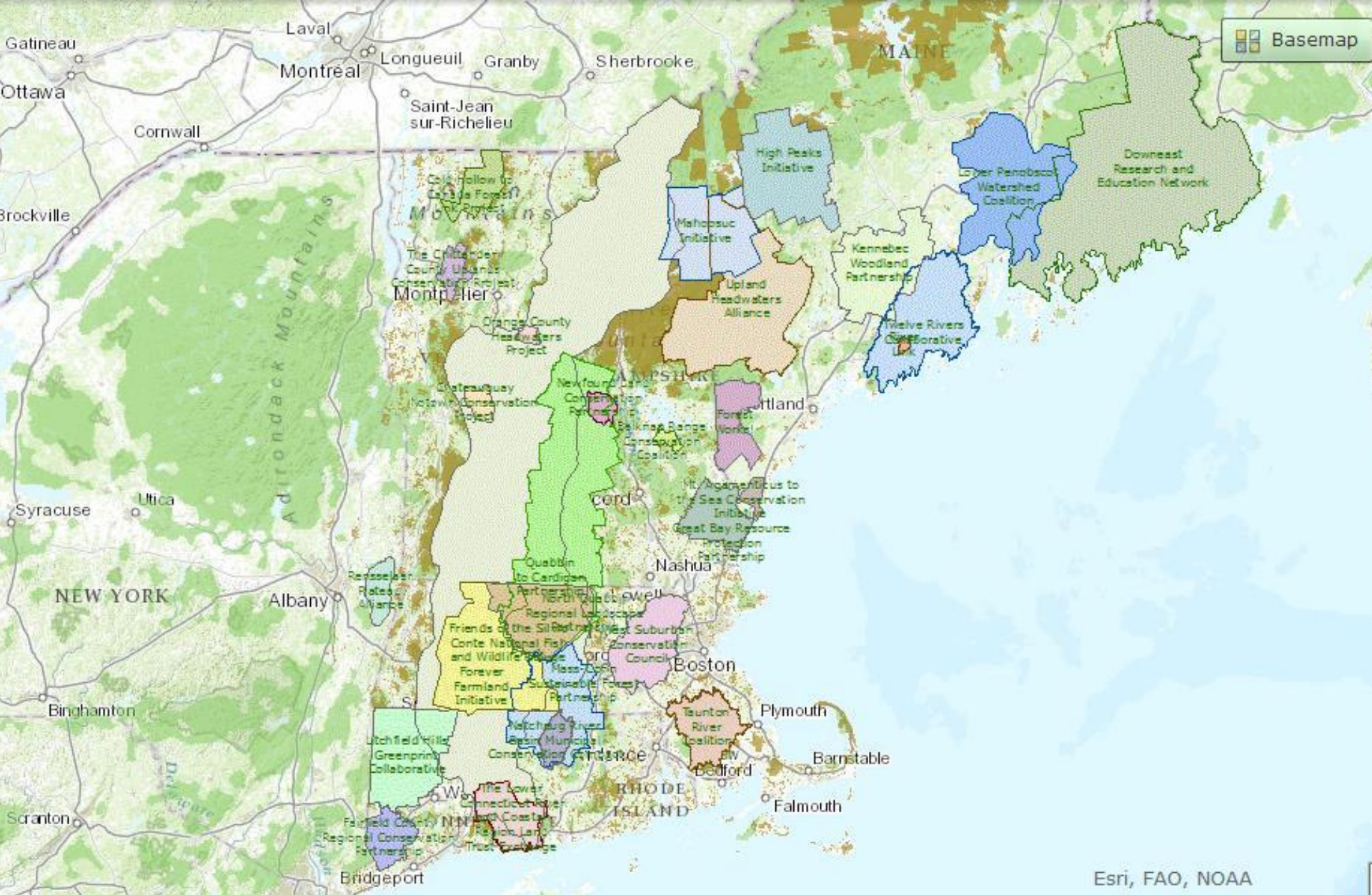
***Landscape-Level Conservation in Down East Maine: Collaborating for  
Strategic Effectiveness***

**Wednesday 23 October 2013**

**Schoodic Education and Research Center (SERC)**



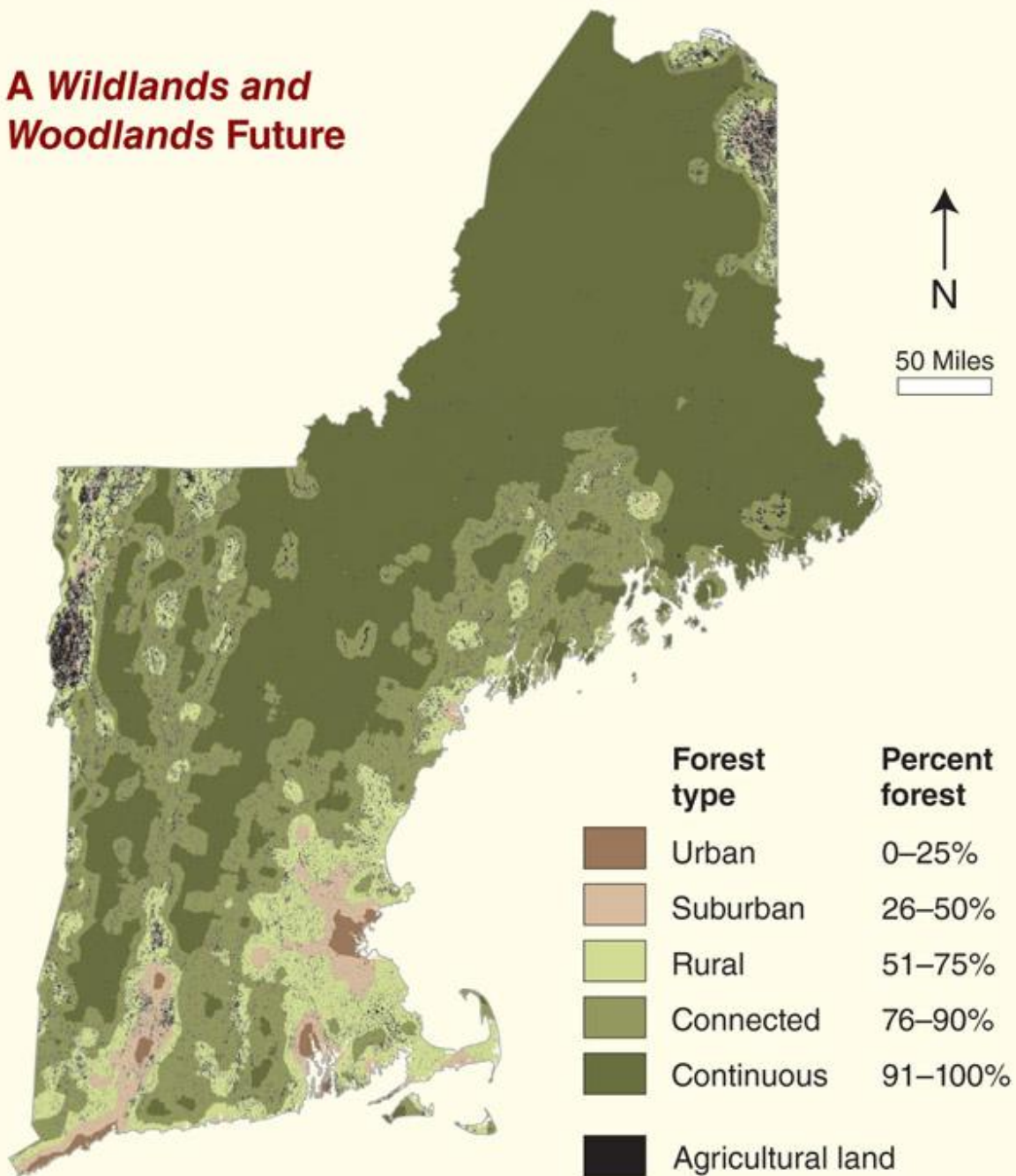


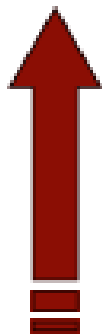


# *Regional Conservation Partnerships*

*Informal networks of people, representing private and public organizations and agencies, who collaborate over time to implement a shared conservation vision across town and sometimes state boundaries.*

## *A Wildlands and Woodlands Future*





## INCREASING THE PACE OF CONSERVATION IN NEW ENGLAND

**SUPPORT THE GROWTH AND CAPACITY OF RCPs AND INCREASE THE AMOUNT OF FUNDING AVAILABLE FOR CONSERVATION ACROSS THE REGION**

**PRIVATE FUNDING**

**MUNICIPAL BONDING & SMART  
GROWTH ZONING**

**STATE FUNDING: TAX CREDITS, OPEN SPACE  
BONDING, PARTNERING WITH RCPs**

**FEDERAL FUNDING: LWCF, FOREST  
LEGACY, ETC.**



# RCPs: A growing movement

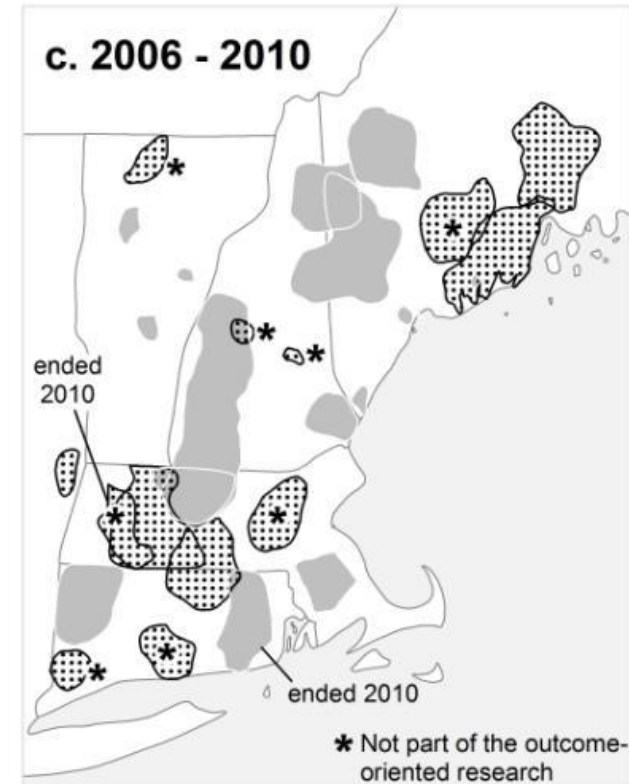
a. 1994 - 1999

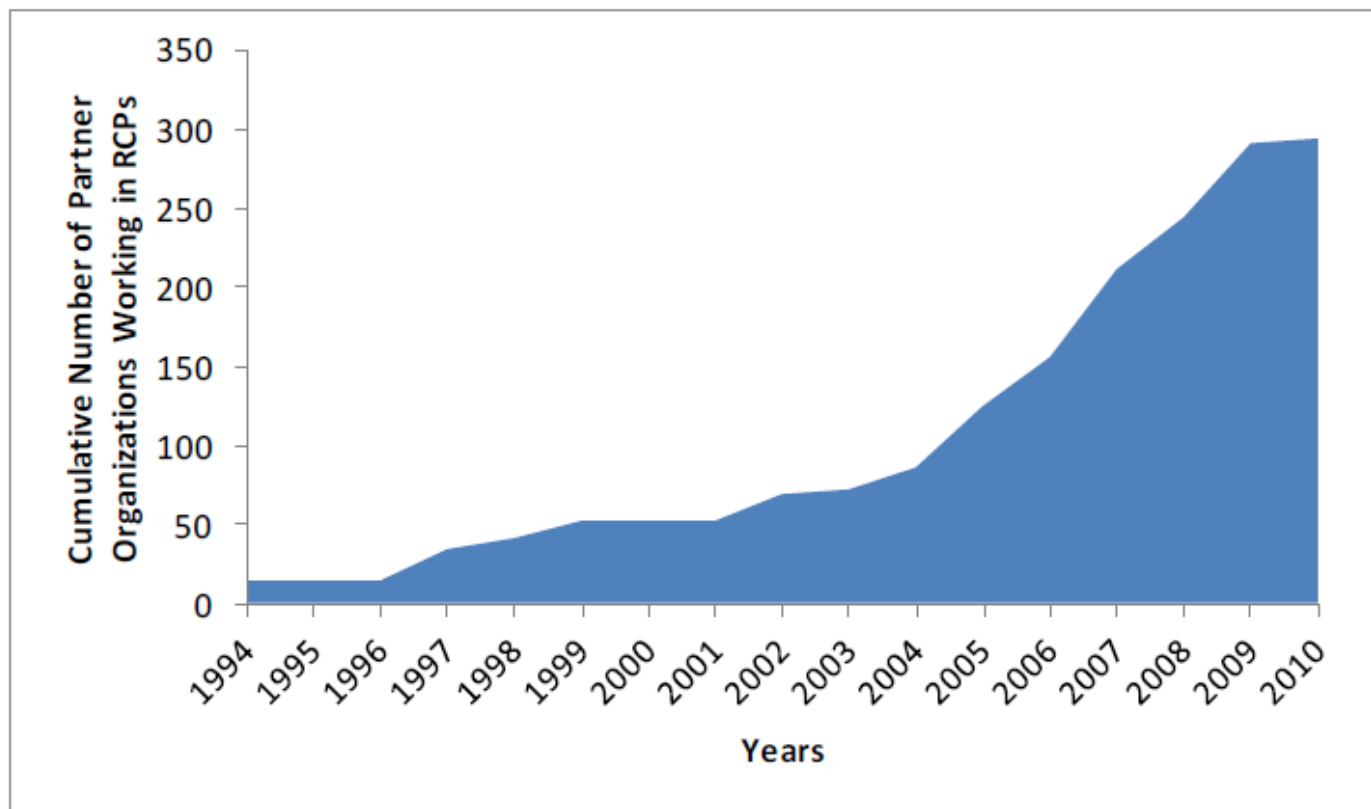


b. 2000 - 2005



c. 2006 - 2010





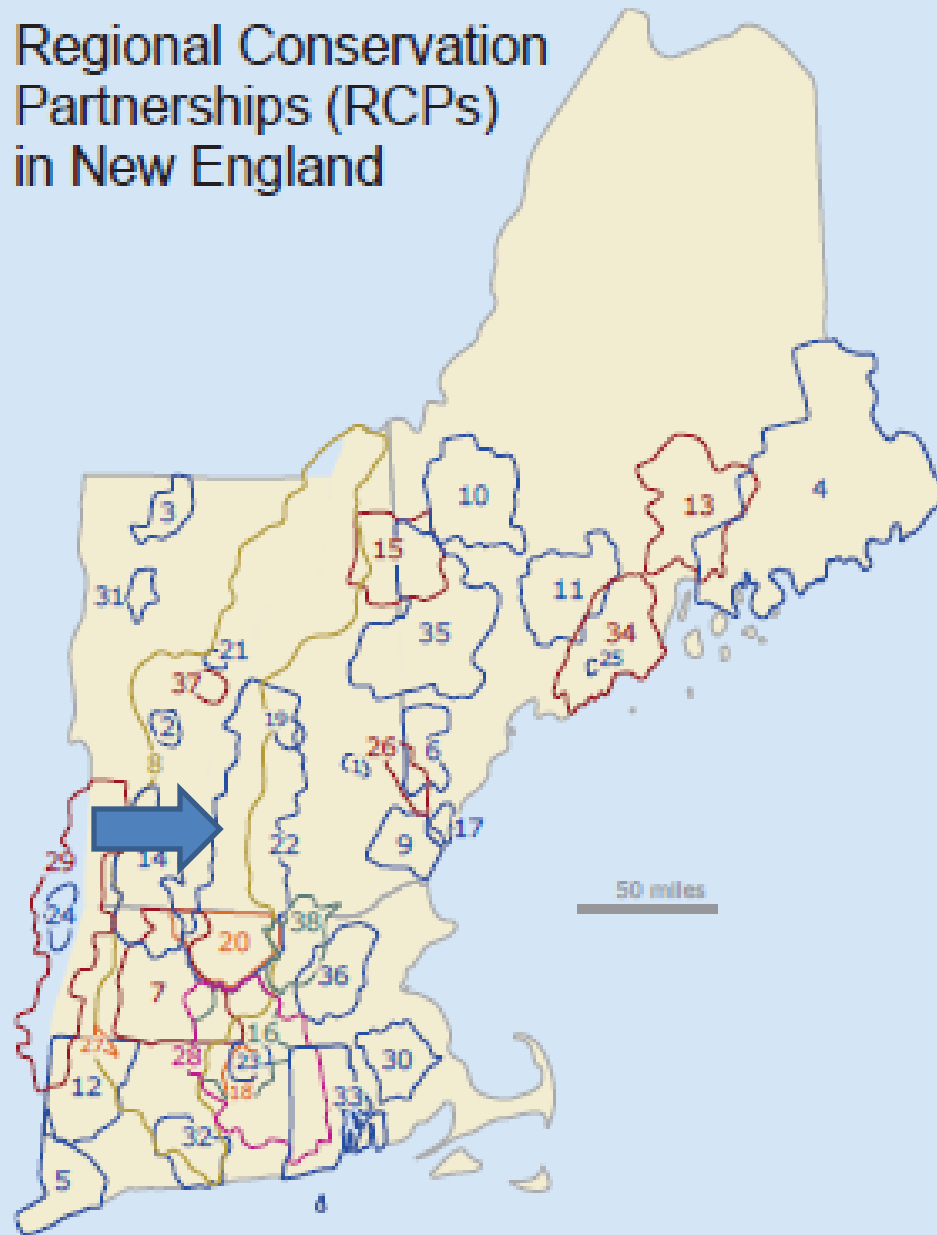
**Figure 2. Growth in the number of organizations working within regional conservation partnerships (1994 - 2010).**



# Conserving RCPs

- Orange County Headwaters Project (VT)
- Mt. Agamenticus to the Sea Conservation Initiative (ME)
- Mahoosuc Initiative (ME, NH)
- North Quabbin Regional Landscape Partnership (MA)
- River Link (ME)
- Taunton River Coalition (MA)
- Chateaugay Notown Conservation Project (VT)
- Chittenden County Uplands Conservation Project (VT)
- Quabbin to Cardigan Partnership (NH, MA)
- Great Bay Resource Protection Partnership (NH)
- Litchfield Hills Greenprint Collaborative (CT)
- Friends of Silvio O. Conte NWR (VT, NH, MA, CT)

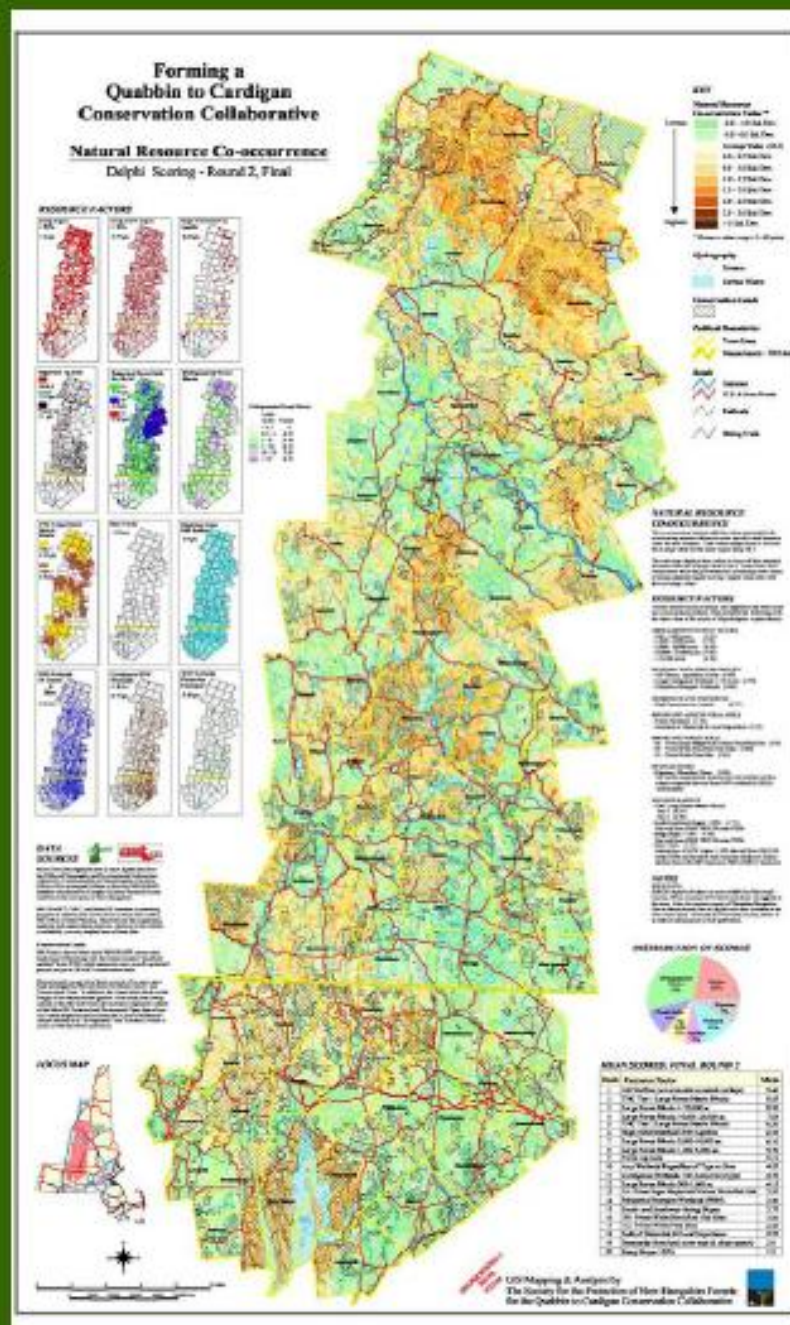
# Regional Conservation Partnerships (RCPs) in New England



- 1 Belknap Range Conservation Coalition
- 2 Chateaugay Notown Conservation Project
- 3 Cold Hollow to Canada Forest Link Project
- 4 Downeast Research and Education Network
- 5 Fairfield County Regional Conservation Partnership
- 6 Forest Works!
- 7 Forever Farmland Initiative
- 8 Friends of the Silvio O. Conte National Fish and Wildlife Refuge
- 9 Great Bay Resource Protection Partnership
- 10 High Peaks Initiative
- 11 Kennebec Woodland Partnership
- 12 Litchfield Hills Greenprint Collaborative
- 13 Lower Penobscot Watershed Coalition
- 14 MA-VT Woodland Partnership
- 15 Mahoosuc Initiative
- 16 Mass-Conn Sustainable Forest Partnership
- 17 Mt. Agamenticus to the Sea Conservation Initiative
- 18 Natchaug River Basin Municipal Conservation Compact
- 19 Newfound Land Conservation Partnership
- 20 North Quabbin Regional Landscape Partnership
- 21 Orange County Headwaters Project
- 22 Quabbin to Cardigan Partnership
- 23 Quiet Corner Initiative
- 24 Rensselaer Plateau Alliance
- 25 River Link
- 26 Salmon Falls Watershed Collaborative
- 27 Sandy Brook Conservation Corridor
- 28 Southern New England Heritage Forest Partnership
- 29 Taconics Landscape Partnership
- 30 Taunton River Coalition
- 31 The Chittenden County Uplands Conservation Project
- 32 The Lower Connecticut River and Coastal Region Land Trust Exchange
- 33 The RI Woodland Partnership
- 34 Twelve Rivers Collaborative
- 35 Upland Headwaters Alliance
- 36 West Suburban Conservation Council
- 37 Taylor Valley Conservation Project
- 38 Nashua River Forest Partnership

# Final Q2C “Co-Occurrence” Map

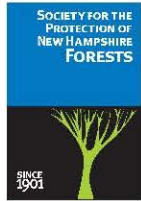
Rank	Resource Factor	Mean
1	300' Buffers (w/out double counted overlaps)	9.40
2	TNC Tier 1 Large Forest Matrix Blocks	8.55
3	Large Forest Blocks > 25,000 ac.	8.20
4	Large Forest Blocks 10,000-25,000 ac.	7.05
5	TNC Tier 2 Large Forest Matrix Blocks	6.30
6	High-yield Stratified Drift Aquifers	6.25
7	Large Forest Blocks 5,000-10,000 ac.	6.10
8	Large Forest Blocks 1,000-5,000 ac.	5.70
9	Prime Ag Soils	5.10
10	Any Wetlands Regardless of Type or Size	4.85
11	Contiguous Wetlands >20 Acres (Any type)	4.70
12	Large Forest Blocks 500-1,000 ac.	4.15
13	1A: Prime Sugar Maple/Ash/Yellow Birch/Red Oak	3.95
14	Palustrine Emergent Wetlands (PEM)	3.80
15	South- and Southwest-facing Slopes	3.75
16	1B: Prime White Birch/Red Oak Sites	3.00
17	1C: Prime White Pine Sites	2.85
18	Soils of Statewide & Local Importance	2.55
19	Deeryards (from land cover type & slope aspect)	3.0
20	Steep Slopes >25%	1.5





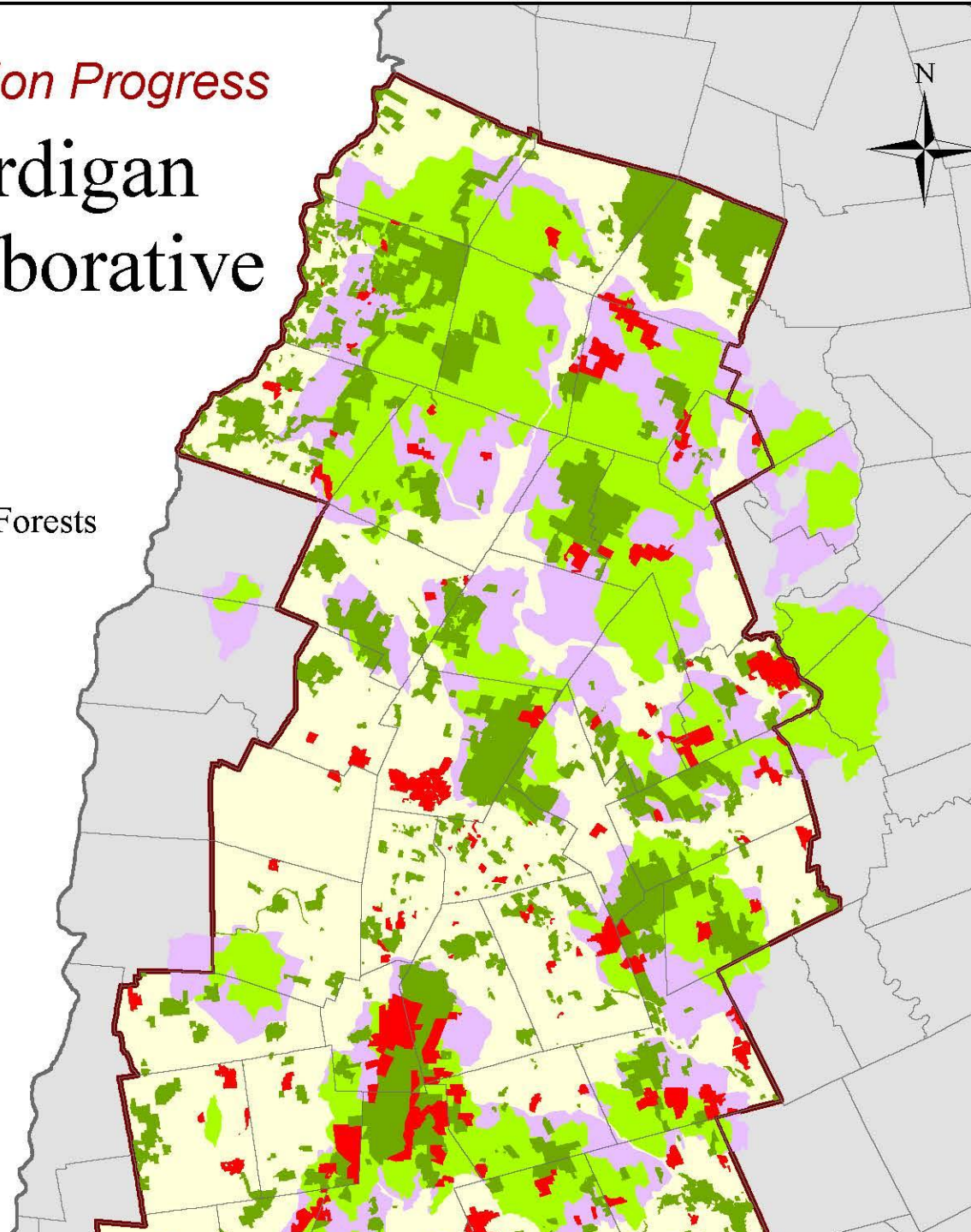
*10 Years of Land Conservation Progress*

# The Quabbin to Cardigan Conservation Collaborative 2002 - 2012



Map Prepared by the  
Society for the Protection of NH Forests  
Land Protection Department

-  Municipal Boundaries
-  Q2C Plan Boundary
-  Land Protected 2002 - 2012
-  Land Protected pre-2002
-  Q2C Core Area
-  Q2C Supporting Landscape





*10 Years of Land Conservation Progress*

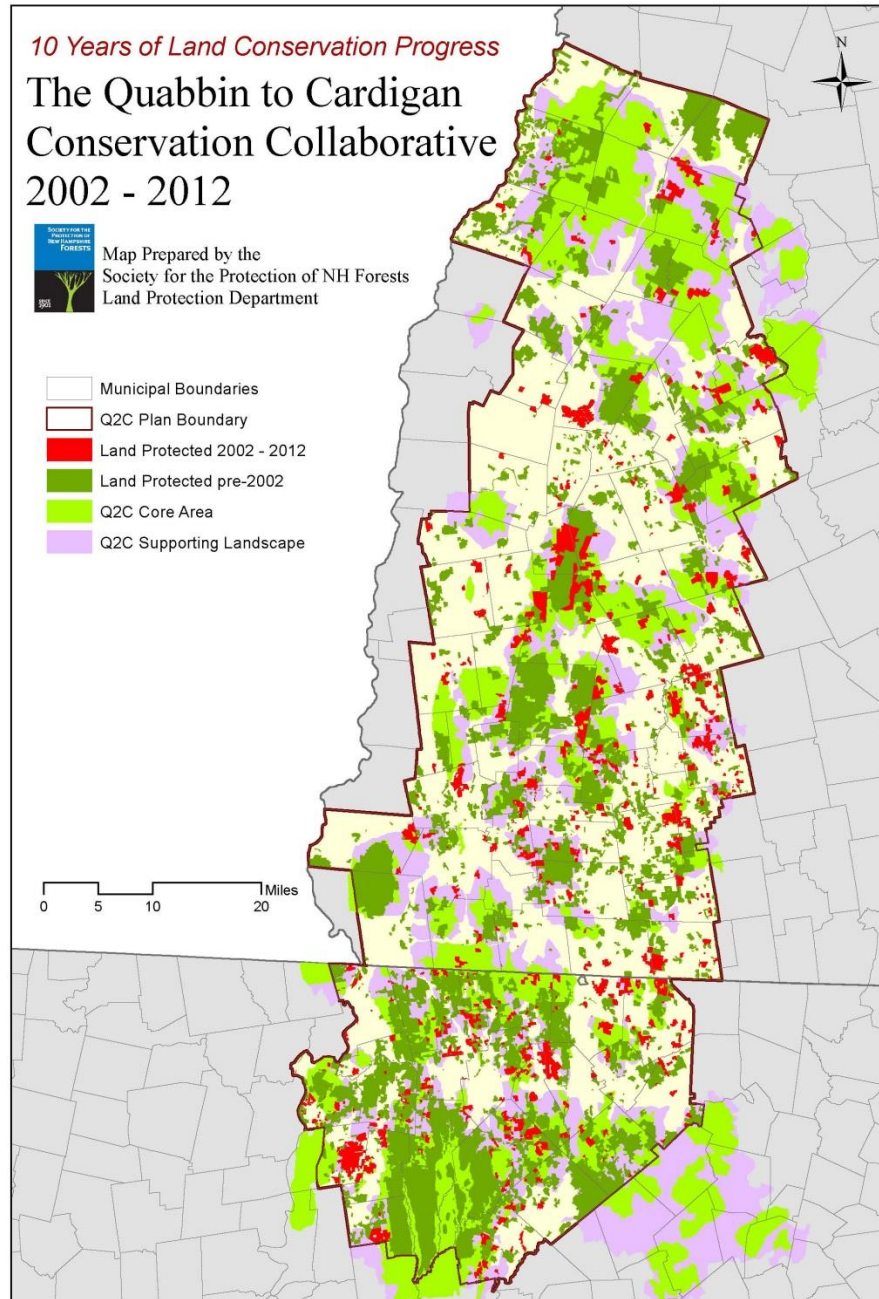
# The Quabbin to Cardigan Conservation Collaborative 2002 - 2012



Map Prepared by the  
Society for the Protection of NH Forests  
Land Protection Department

- Municipal Boundaries
- Q2C Plan Boundary
- Land Protected 2002 - 2012
- Land Protected pre-2002
- Q2C Core Area
- Q2C Supporting Landscape

0 5 10 20 Miles



# RCP Network – Coordinated by Highstead



- **Regional Networking and Associated Services**
- **SWOT Research and Analysis**
- **Targeted Technical and Funding Assistance**



*(Ole Amundsen III and Reggie Hall, The Conservation Fund)*





- Annual Conference “RCP Network Gathering”
  - State RCP Meetings
  - Web resources & interactive map
  - Service Provider Database
  - LinkedIn Group
  - Webinars
  - Trainings
- “Excellent. This from a jaded conference goer 😊  
Exciting stuff!”*

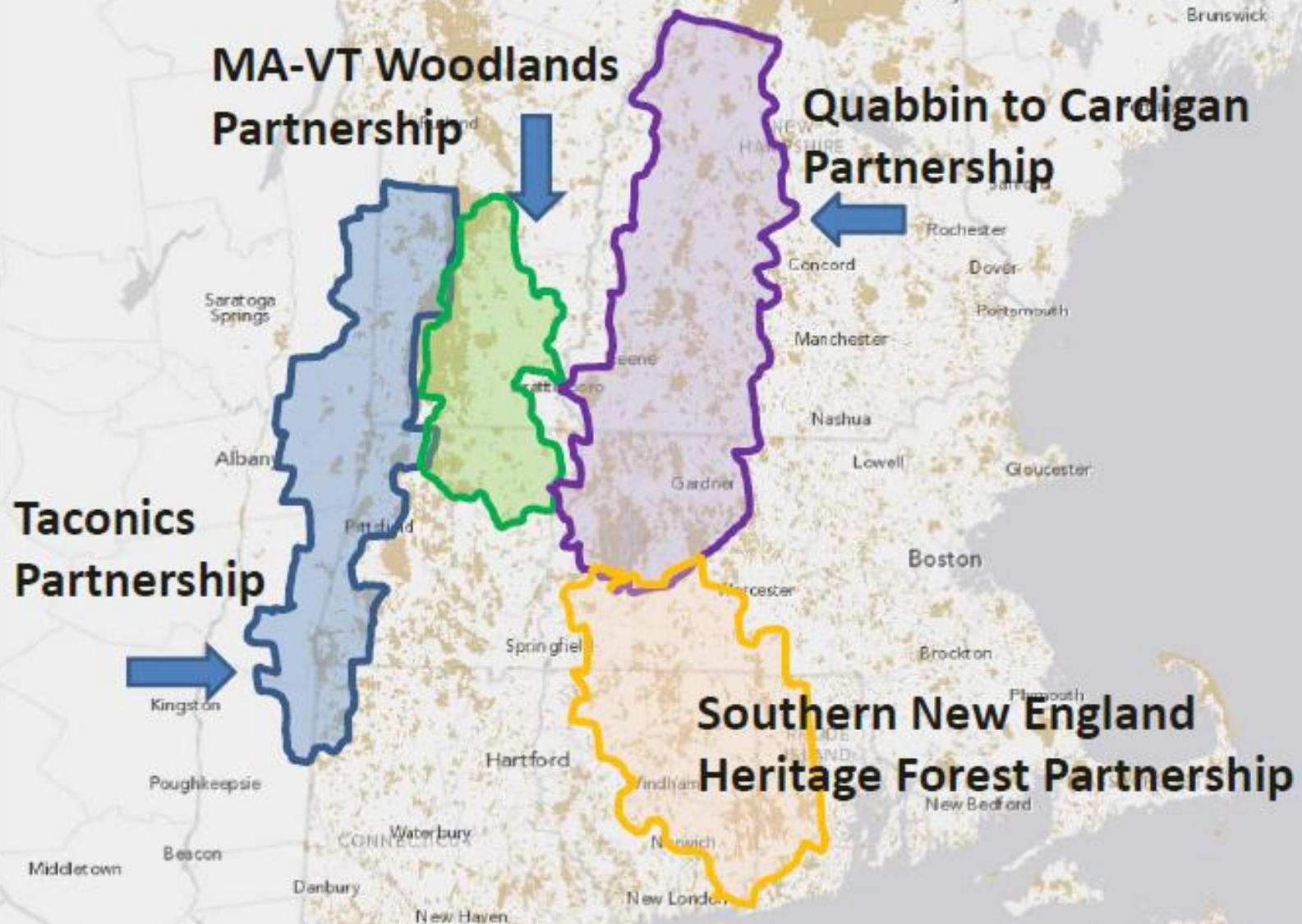
# Research on Attributes of RCP Success

- Partners meet regularly and in-person
- Size of the region
- # towns in region
- Host partner FTE's
- Ratio of Host Partner Territory to Partnership Region
- 2+ governance bodies
- Towns represented
- Have a mapped vision
- Towns involved in conserv. planning
- Partners can get staffing & funding
- Partners coordinate activities
- Age of the RCP

Source: Labich, W.G., E.M. Hamin, and S. Record. 2013. Regional Conservation Partnerships in New England. *Journal of Forestry* 111(5):326-334.

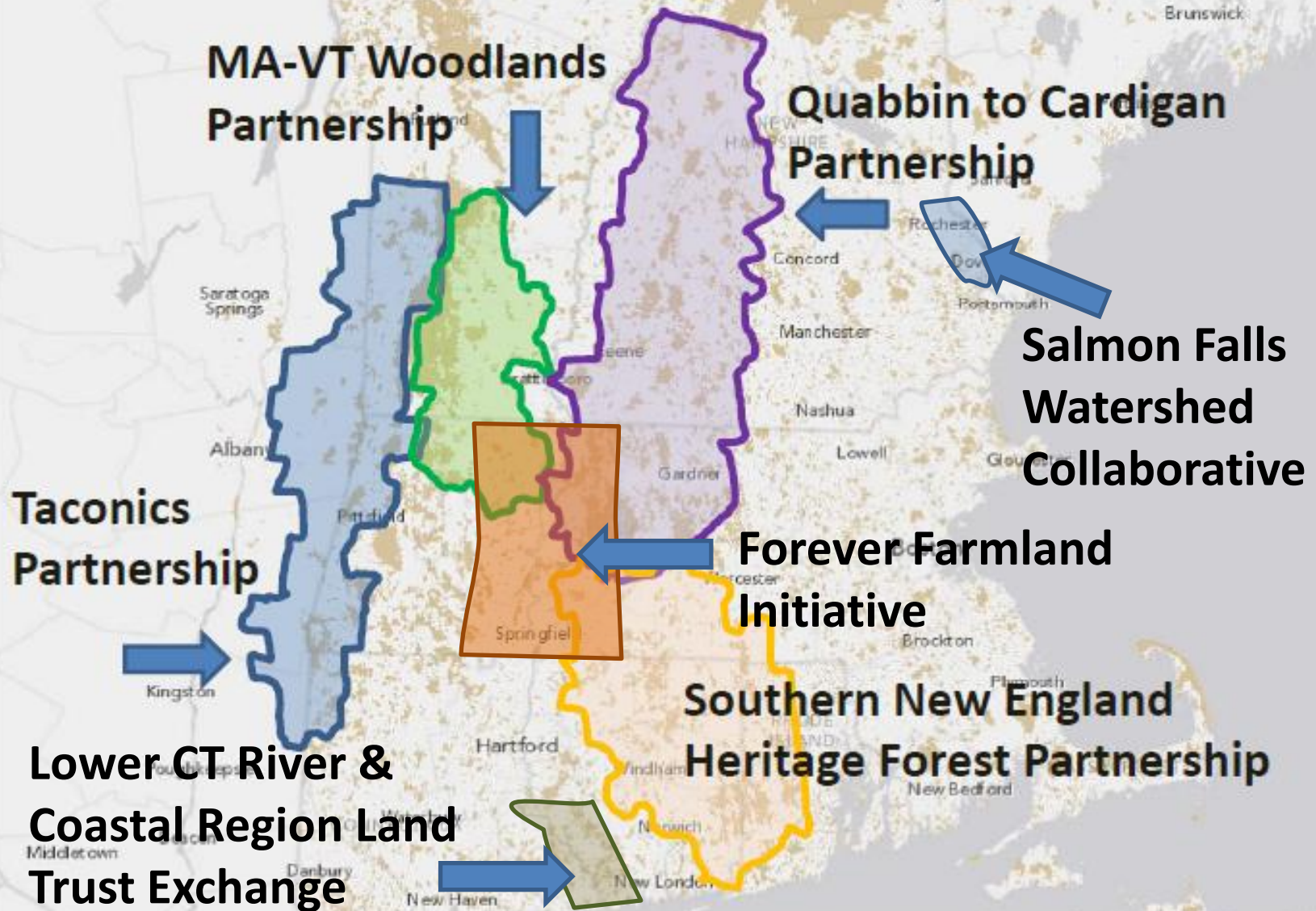


# North East State Foresters Association Regional Pilot Demonstration Project - NY/NE Family Forest Owner Engagement

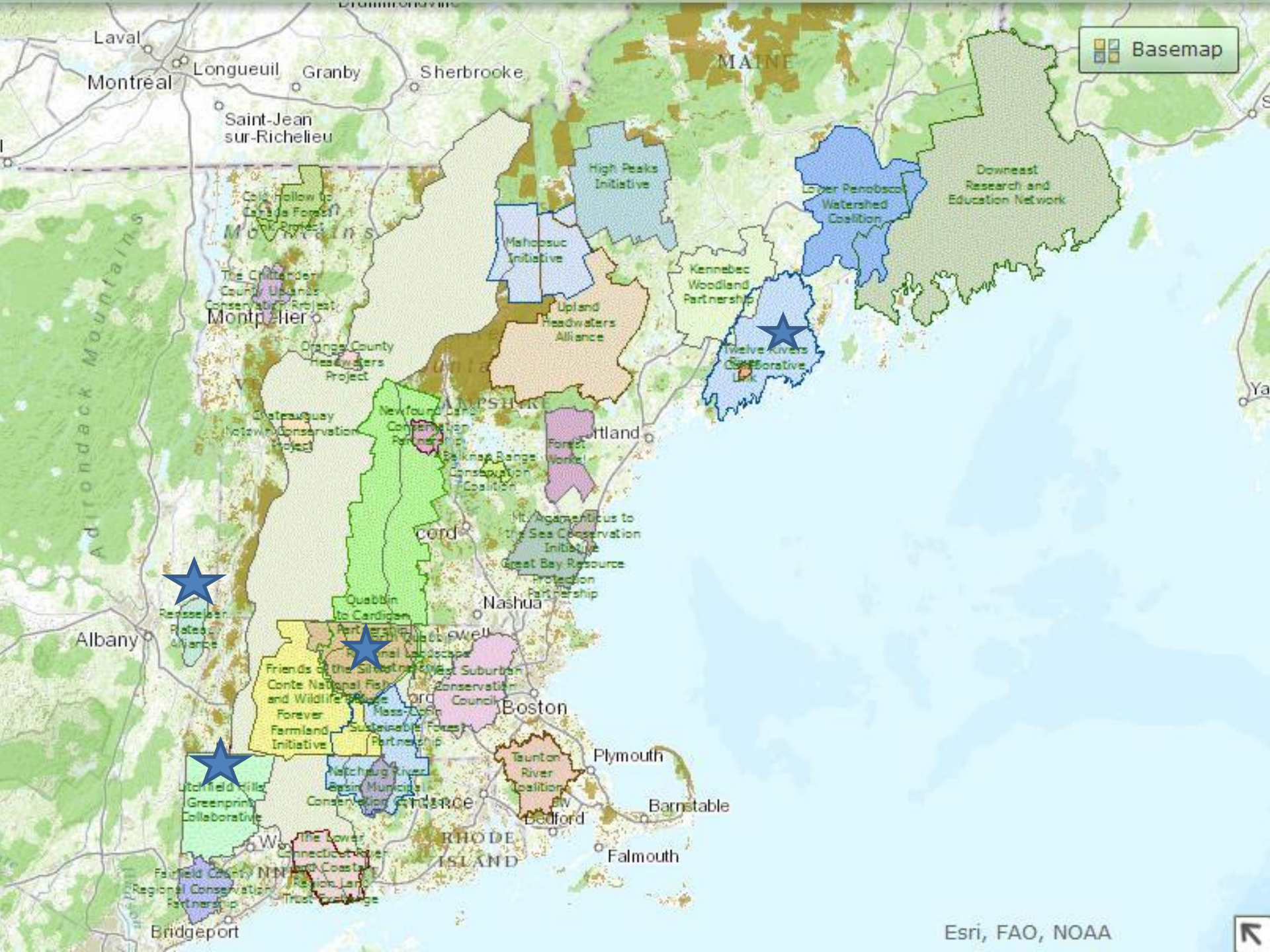


# North East State Foresters Association Regional Pilot Demonstration Project - NY/NE Family Forest Owner Engagement

So.  
Maine







# For more information

**The RCP Network and the Nov. 13 RCP Network Gathering:**

[www.wildlandsandwoodlands.org/rcpnetwork](http://www.wildlandsandwoodlands.org/rcpnetwork)

Join the Regional Conservation Partnership Network Group on [LinkedIn](#)

Bill Labich, Highstead Regional Conservationist  
[blabich@highstead.net](mailto:blabich@highstead.net) (413) 658 - 5308