

Conservation Partnerships in the Cobscook Bay Whole Place

Marty Anderson
Project Manager
Maine Coast Heritage Trust

Photo flight courtesy of Lighthawk



Maine Coast Heritage Trust
A Statewide Land Conservation Organization



“Whole Place” - priority conservation sites where significant scenic, ecological, and recreational values exist, and where Maine Coast Heritage Trust takes a proactive approach to conservation.

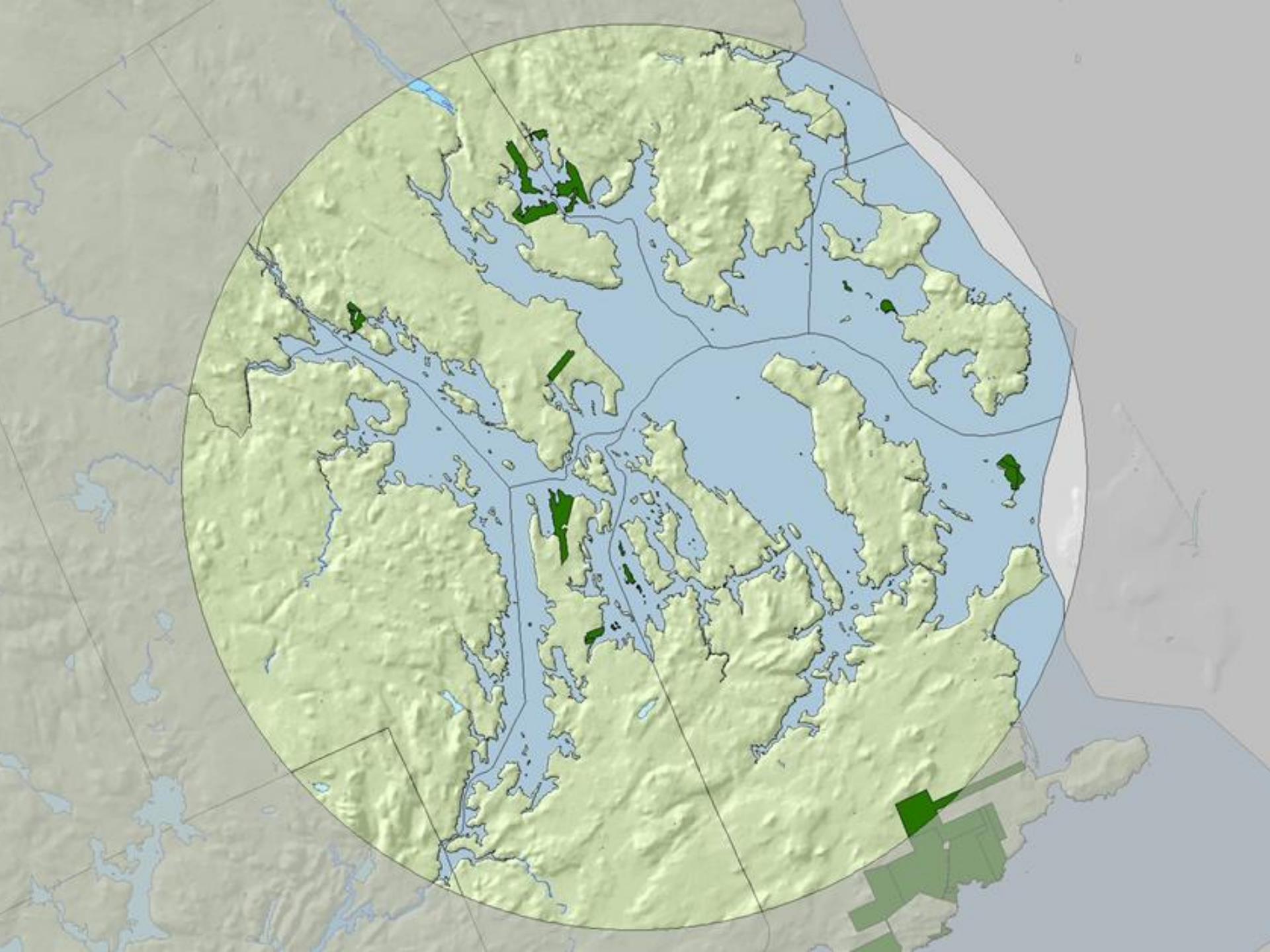


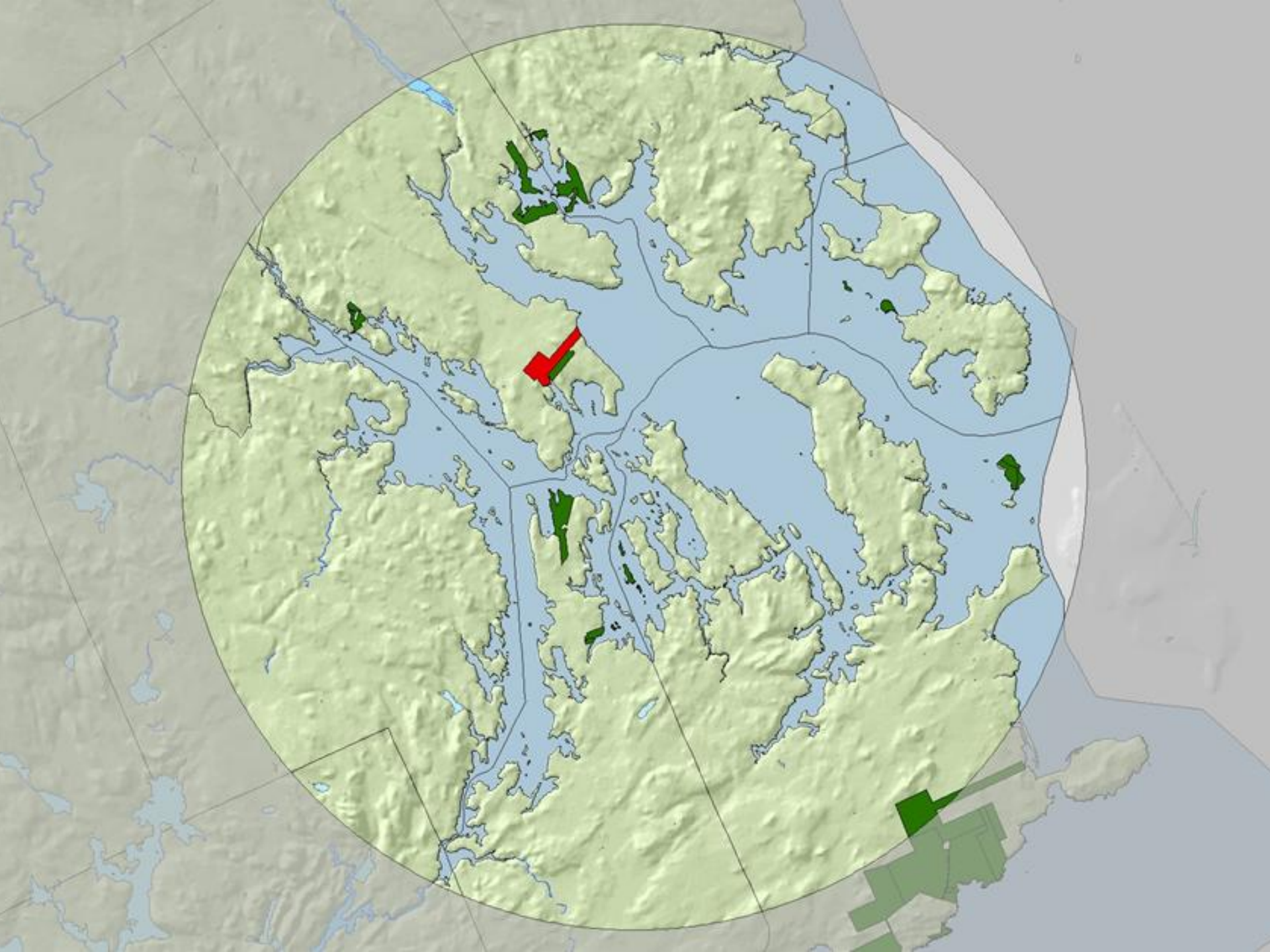
Bridget Besaw

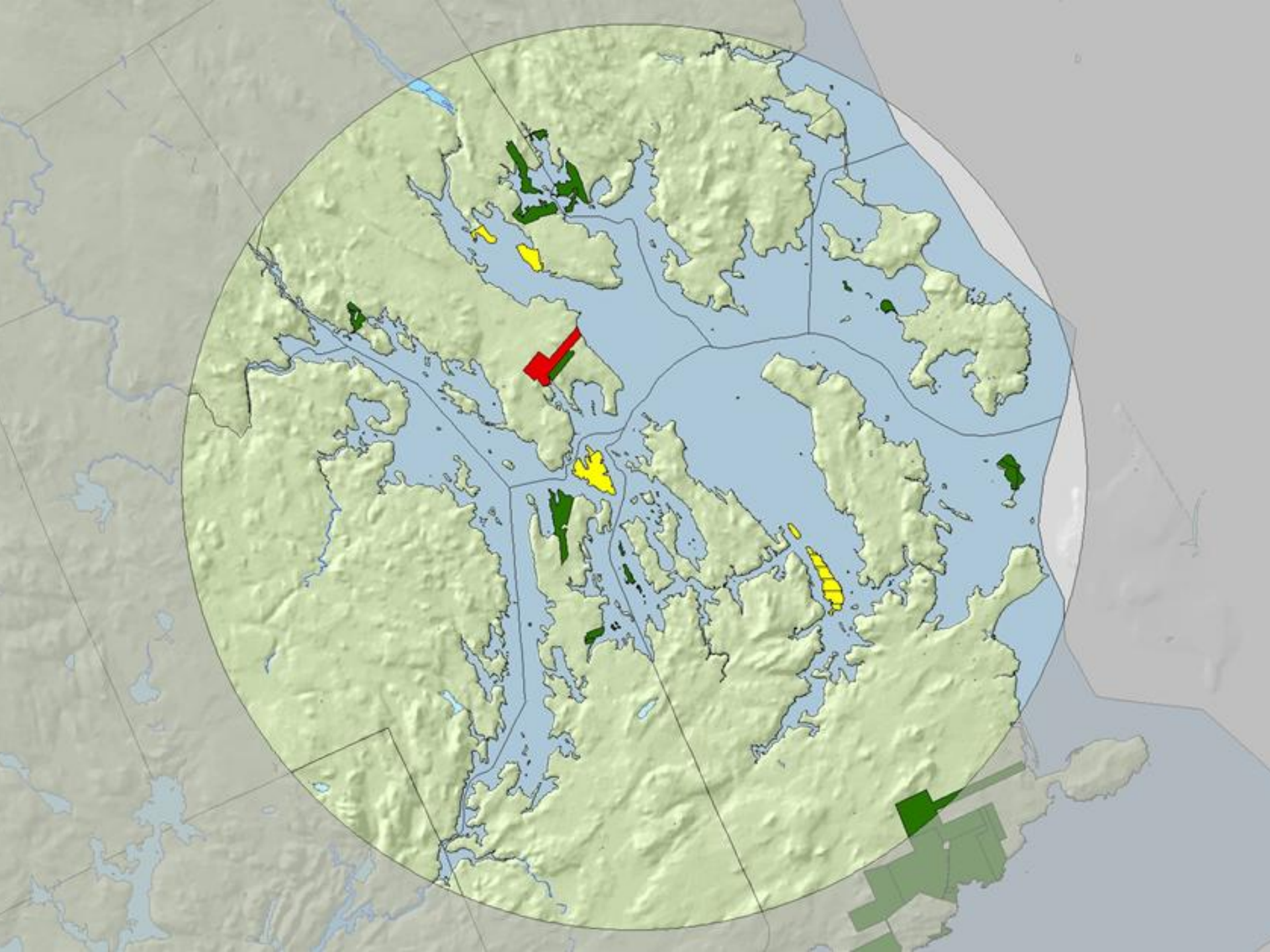


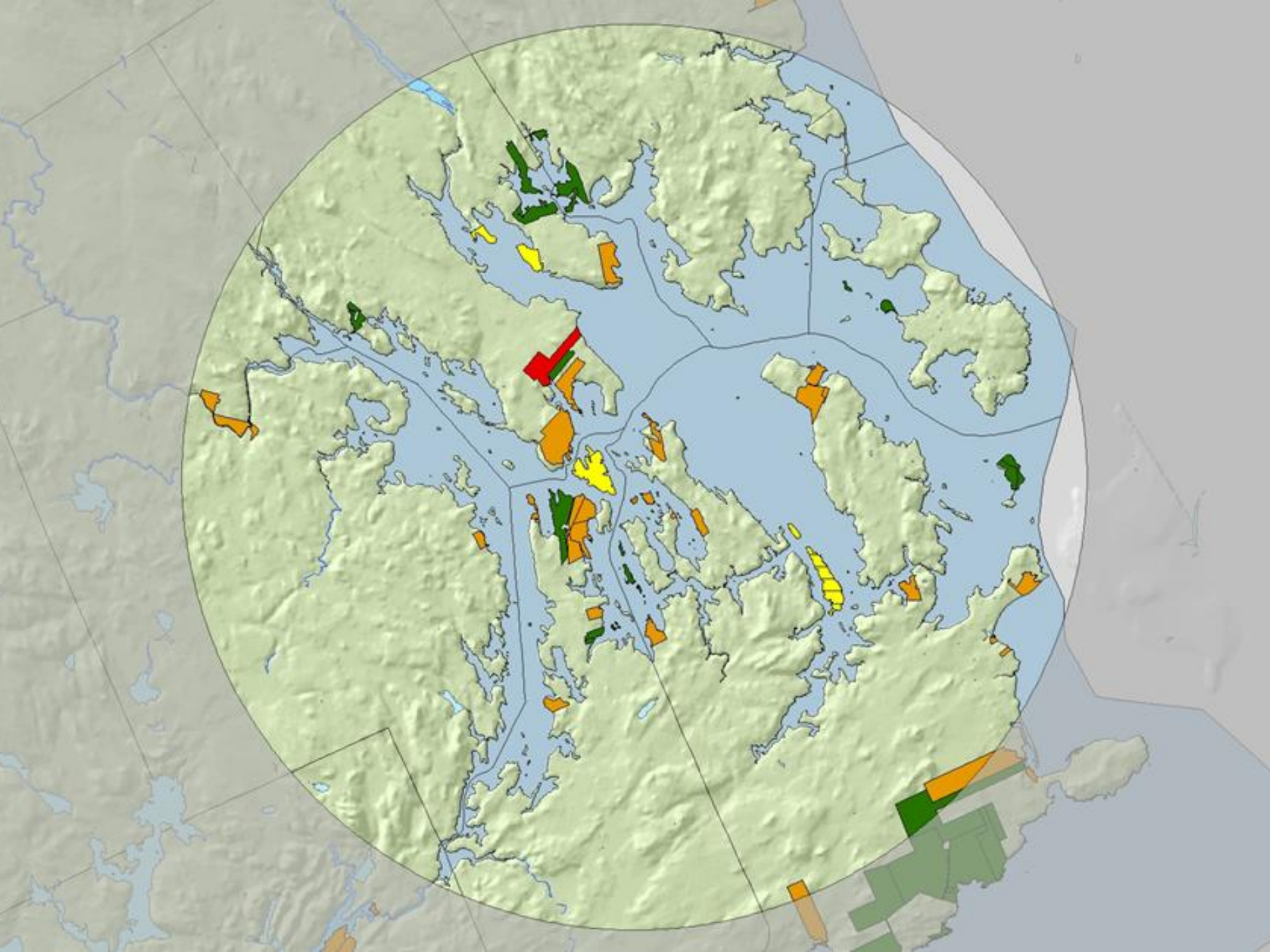
Bridget Besaw

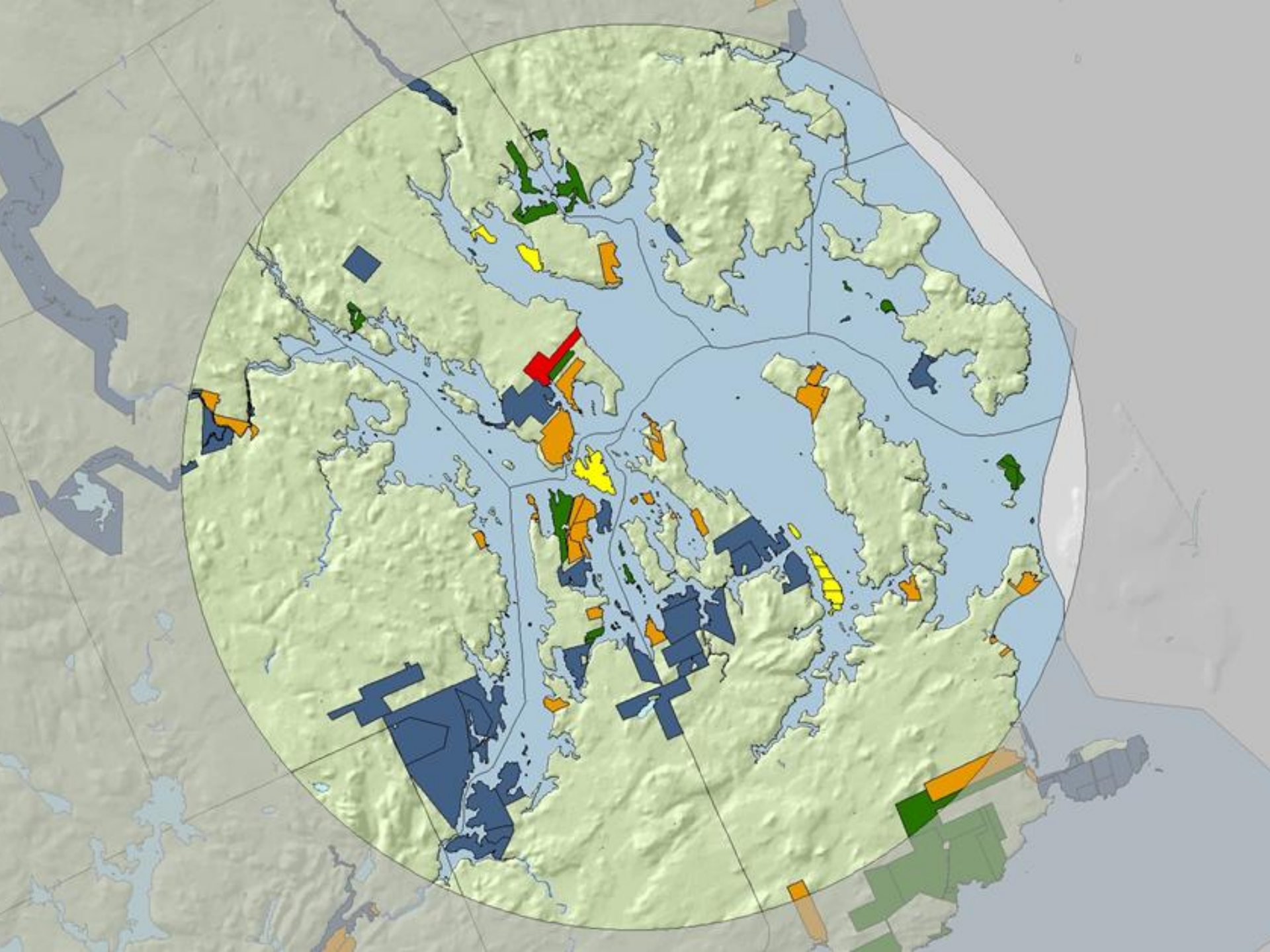


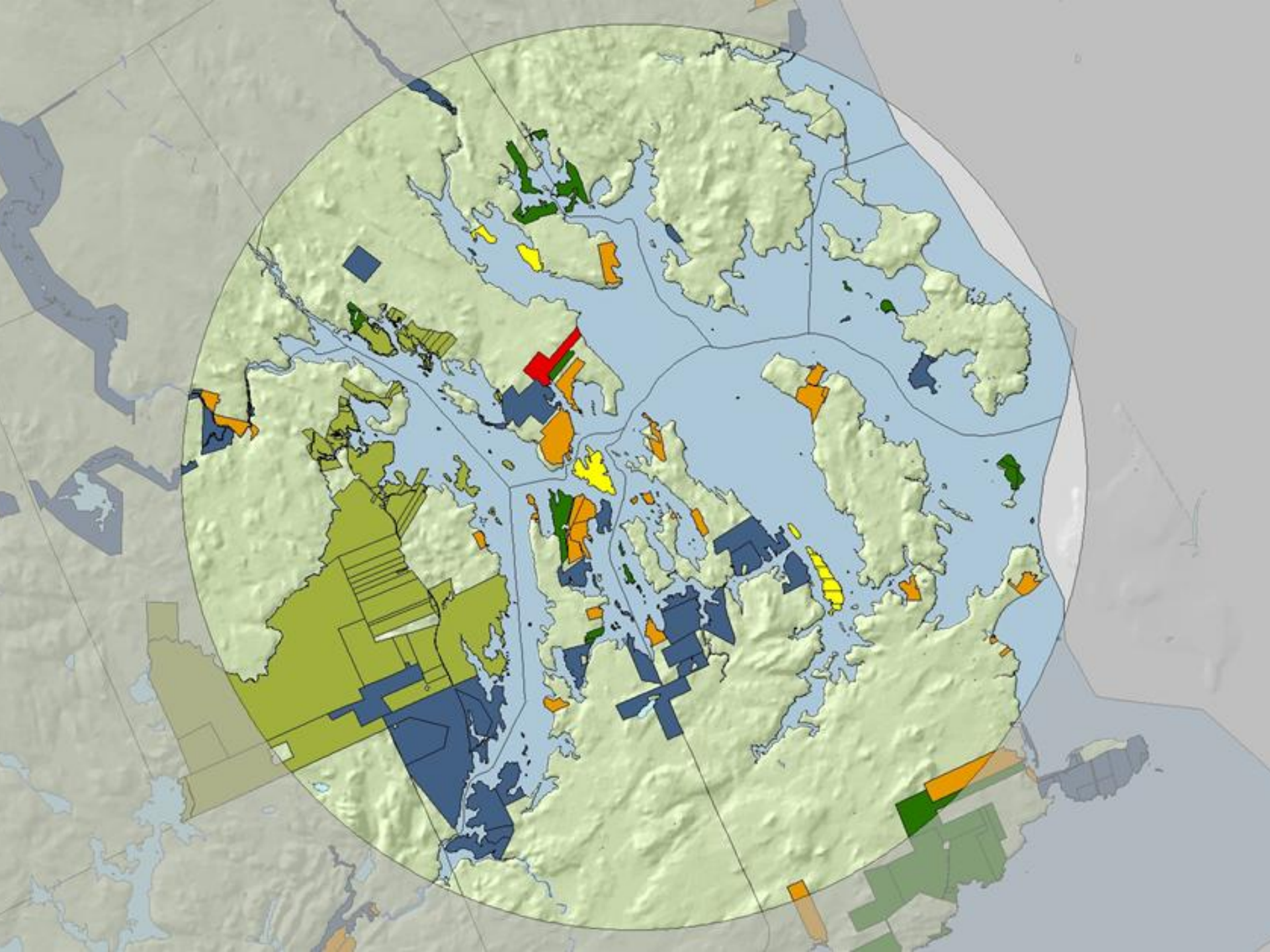




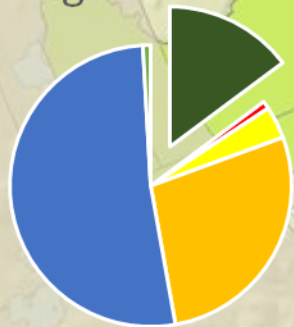








of Conservation
Holdings as % of Total



■ MCHT ■ MFT ■ TNC
■ DCC ■ State ■ USFWS



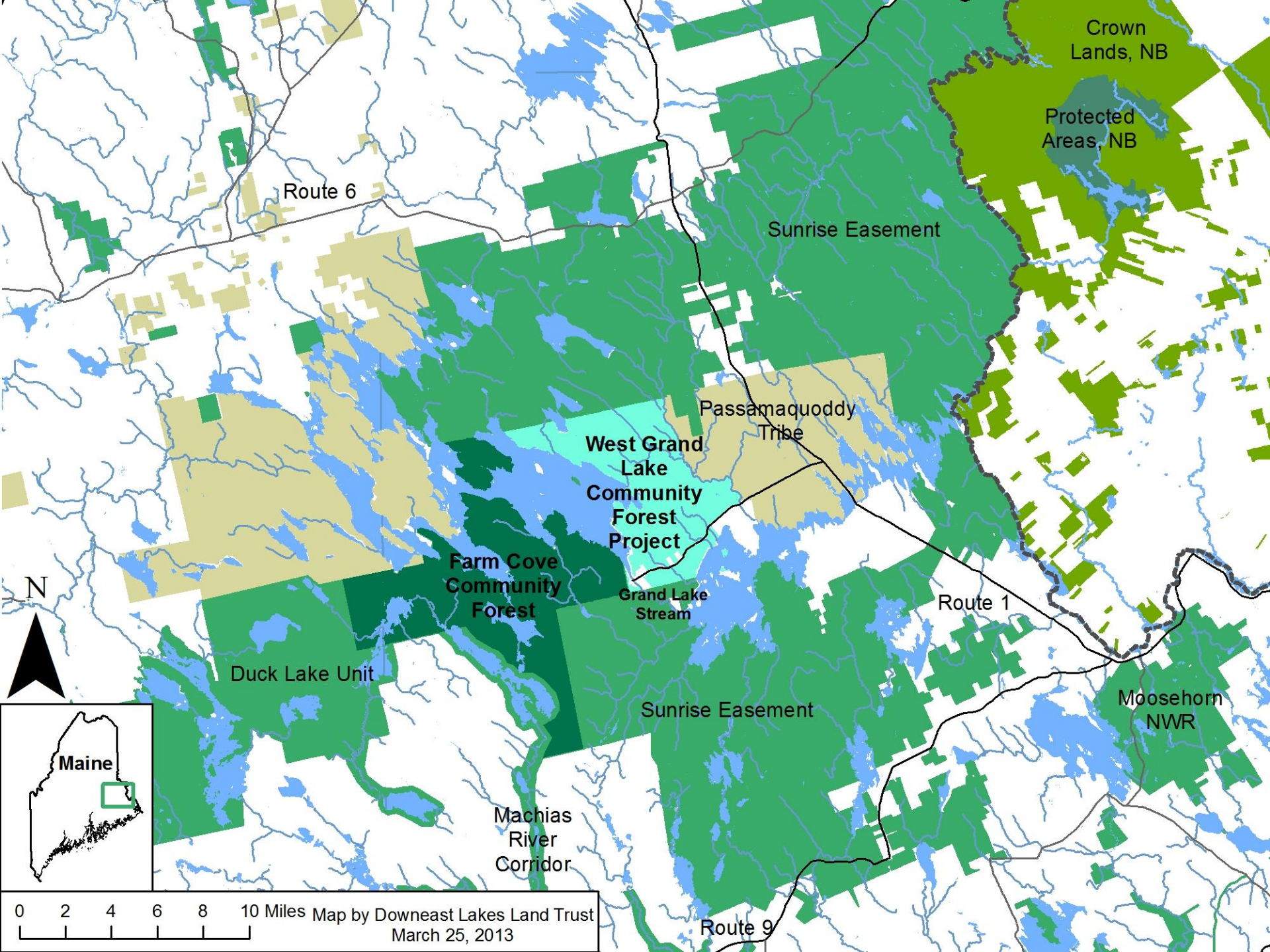
Downeast Lakes
LAND TRUST ®

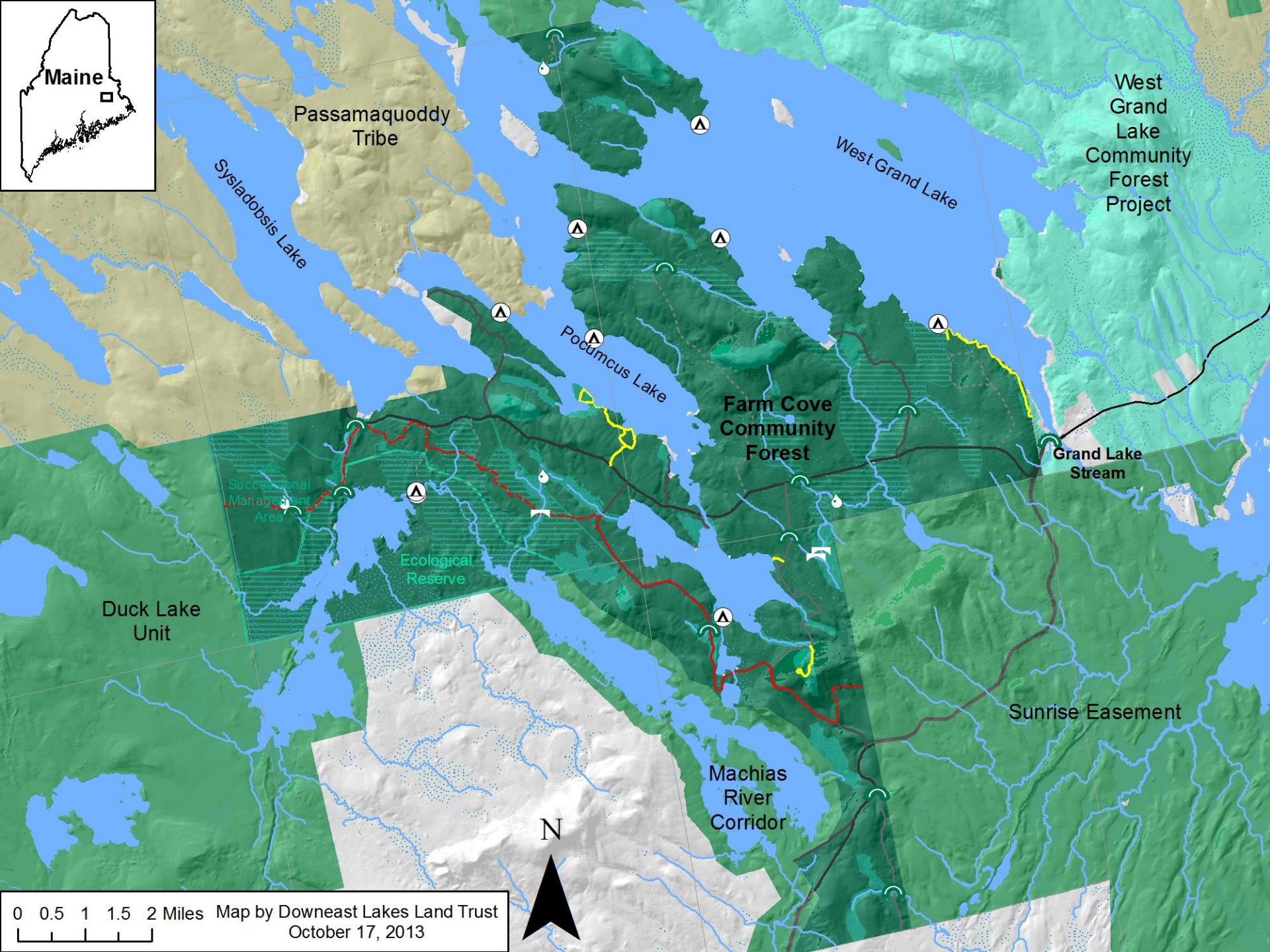
Conservation as Economic Strategy



Downeast Lakes
LAND TRUST ®

FORESTS, LAKES, & PEOPLE







Downeast Lakes
LAND TRUST ®

Many Partners!

Conservation Org.s (Statewide to National)

Private donors

Corporations

Foundations

Federal and State Agencies

Networks and Regional Entities

Management Partners

www.downeastlakes.org

All photos DLLT; Aerial Photos with assistance from LightHawk

Landscape on Many Levels

Downeast Coastal Conservancy

Convergence Conference – October 23, 2013



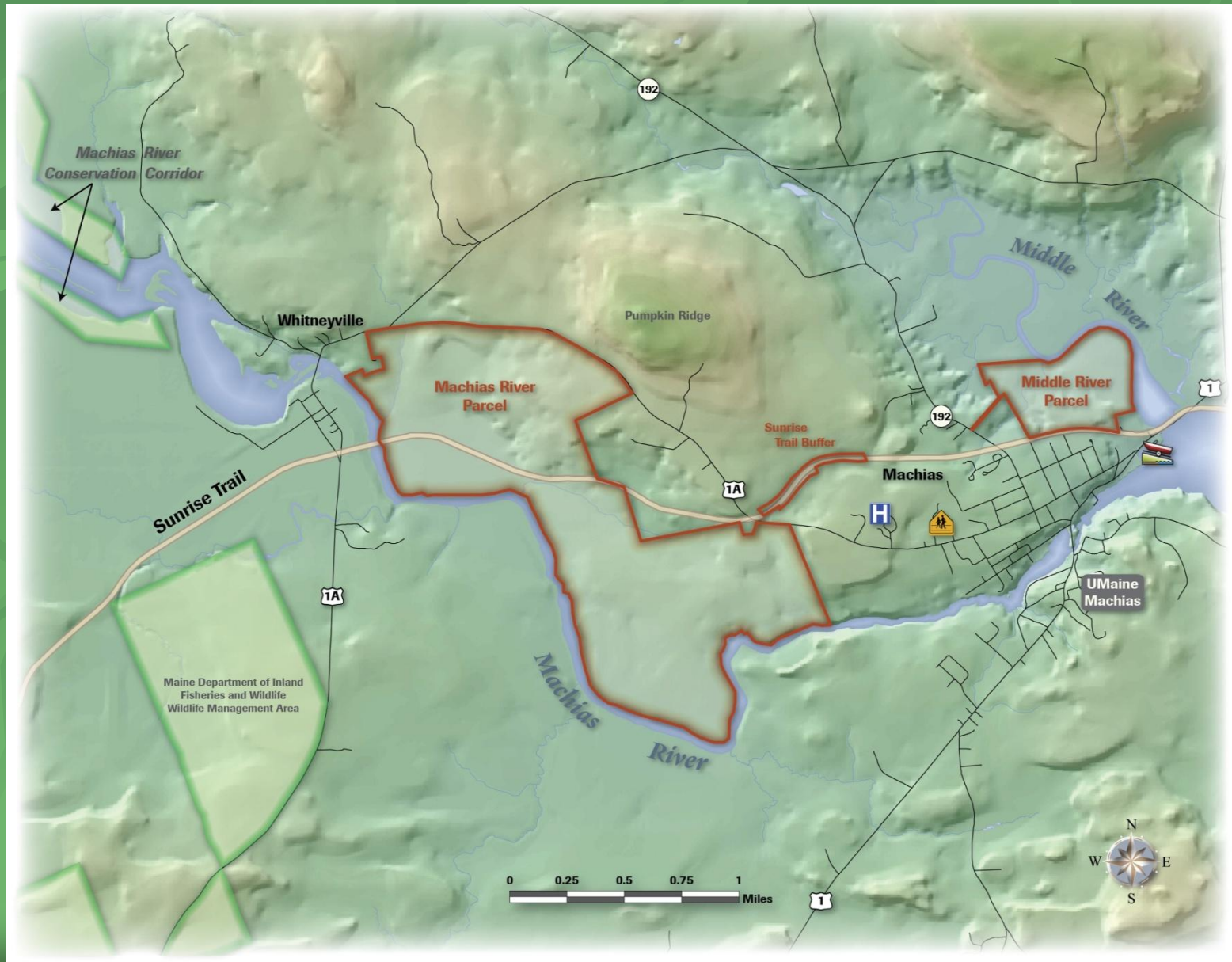
The Two Rivers Campaign

Community Revitalization through Conservation



The Two Rivers Project Area

Building on Community Assets



DOWNEAST COASTAL CONSERVANCY



Two Rivers Recreation Area

Machias River Community Forest & the St. Regis Pasture on the Middle River





DOWNEAST SALMON FEDERATION

Our Mission:

To conserve wild Atlantic salmon and its habitat, restore a viable sports fishery and protect other important river, scenic, recreational and ecological resources in eastern Maine.



OUR PROGRAMS



WSRC

Wild Salmon Resource Center

Education, outreach
and technical support
on salmon and
watersheds



DRLT

Downeast Rivers Land Trust

Protection of critical
habitats and public
access



EMARC

East Machias Aquatic Research Center

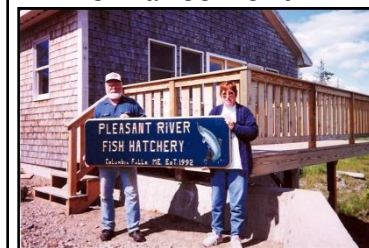
Research, stock
enhancement,
education, and outreach



PRFH

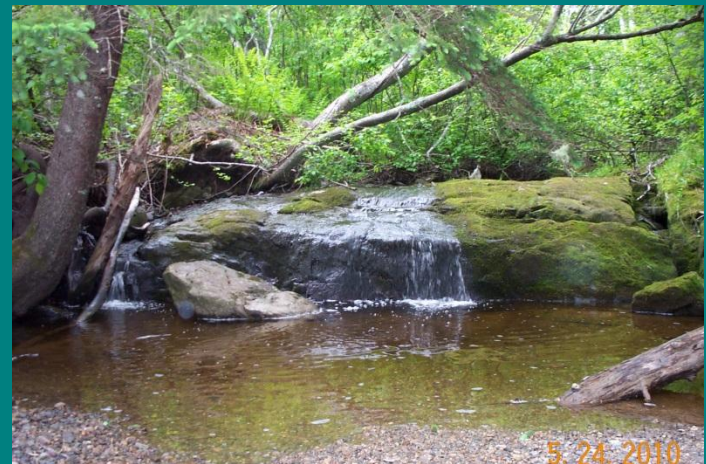
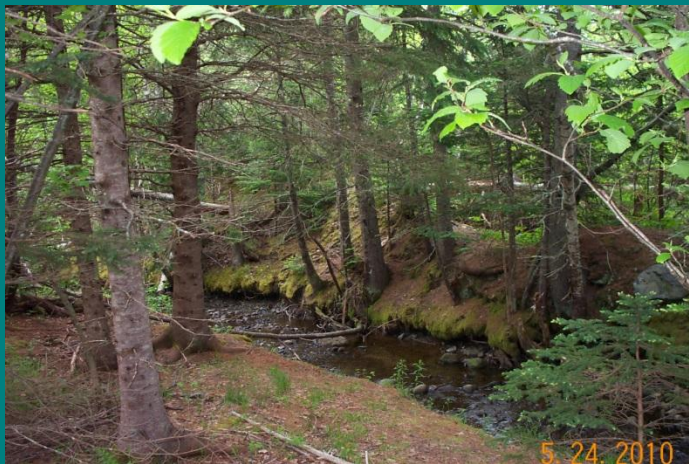
Pleasant River Fish Hatchery

Community
involvement in
salmon stock
enhancement

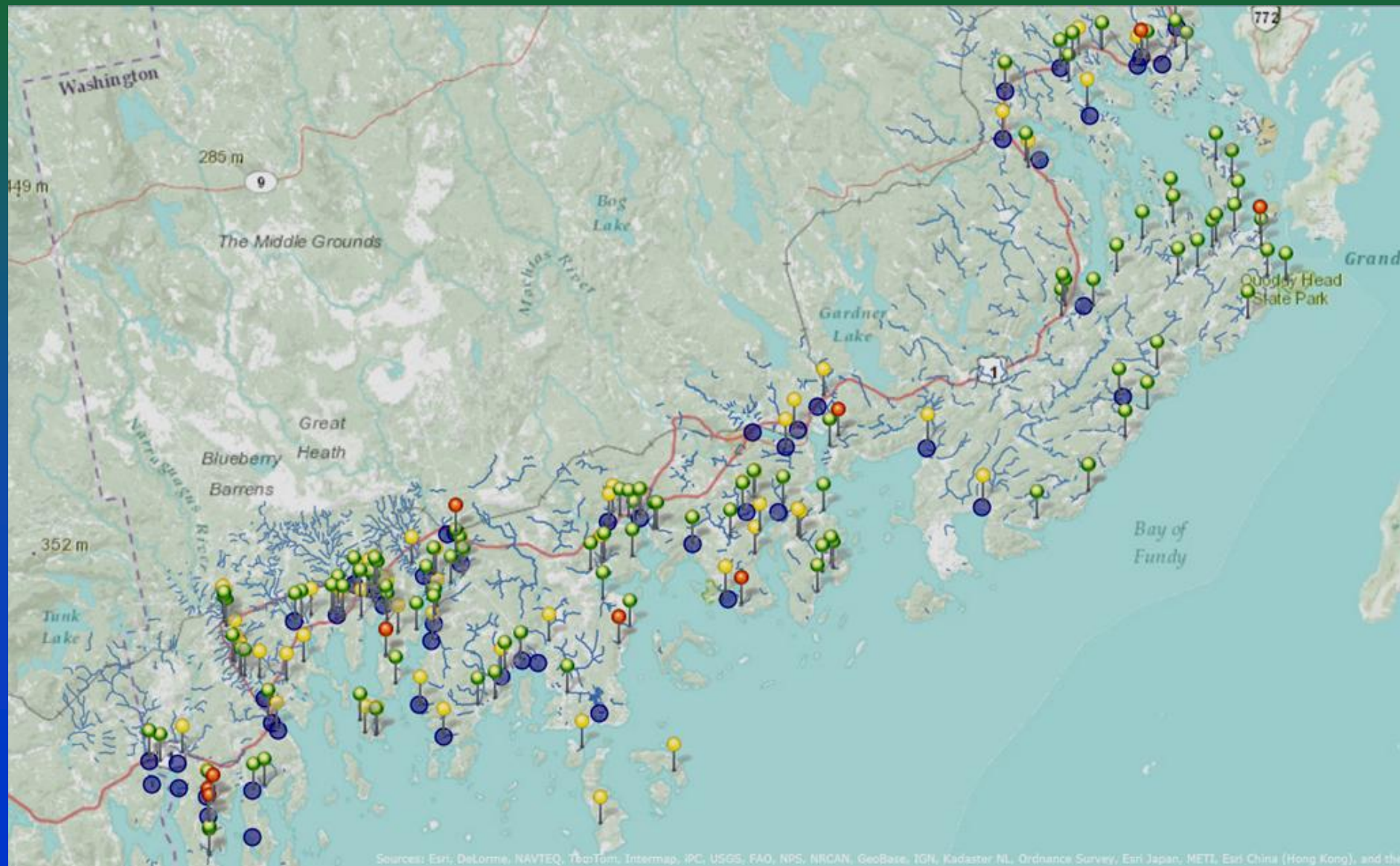


Redmond's Creek, Harrington

The first (*of many future*) smelt habitat preserves?



Smelt Survey Locations



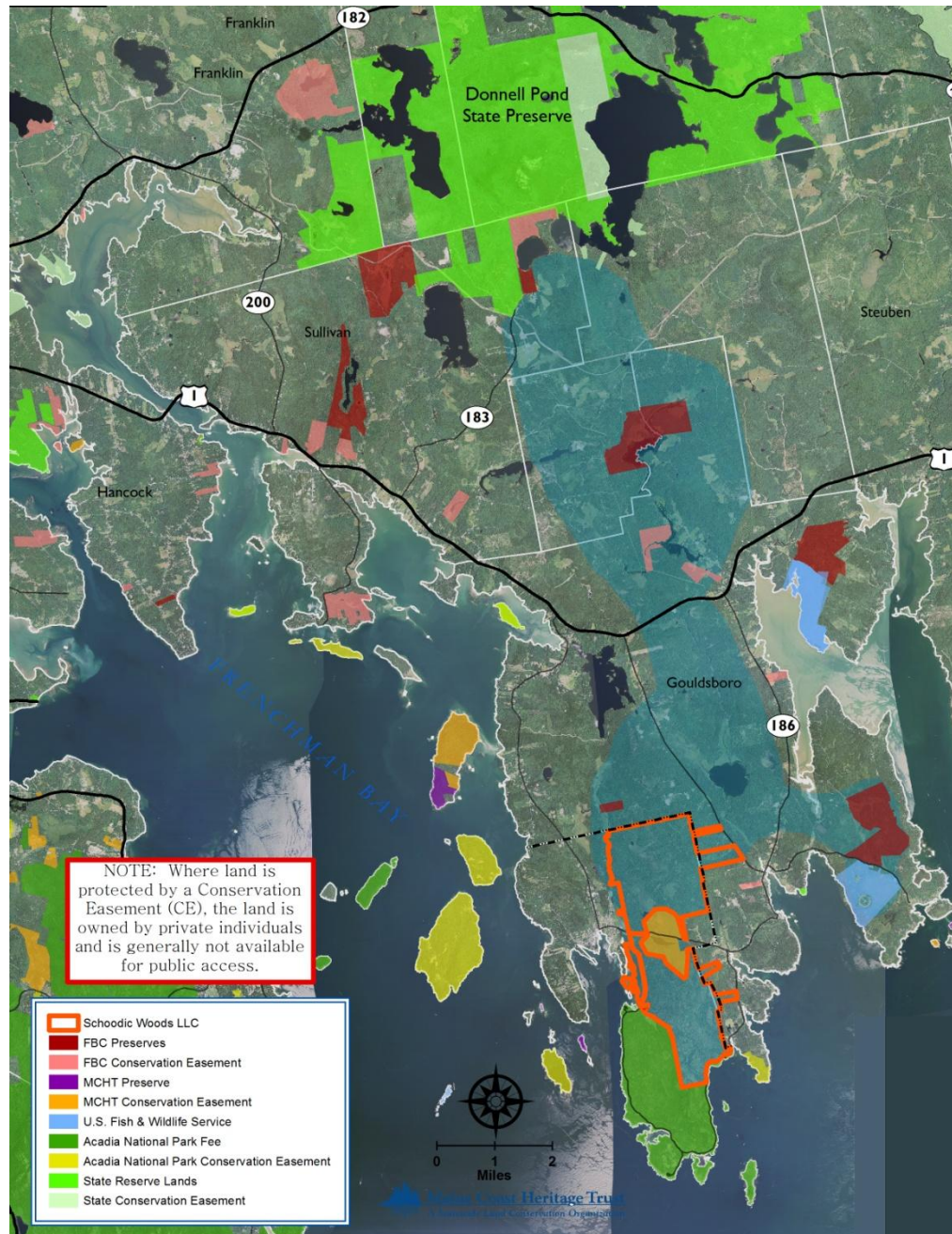
SMELT FRY: Celebrating the Fishery (*“a positive fish story”*)





Schoodic Point to Donnell Pond Reserve

FBC and the Collaborative Role
of Private Land Trusts
in Landscape Level Conservation







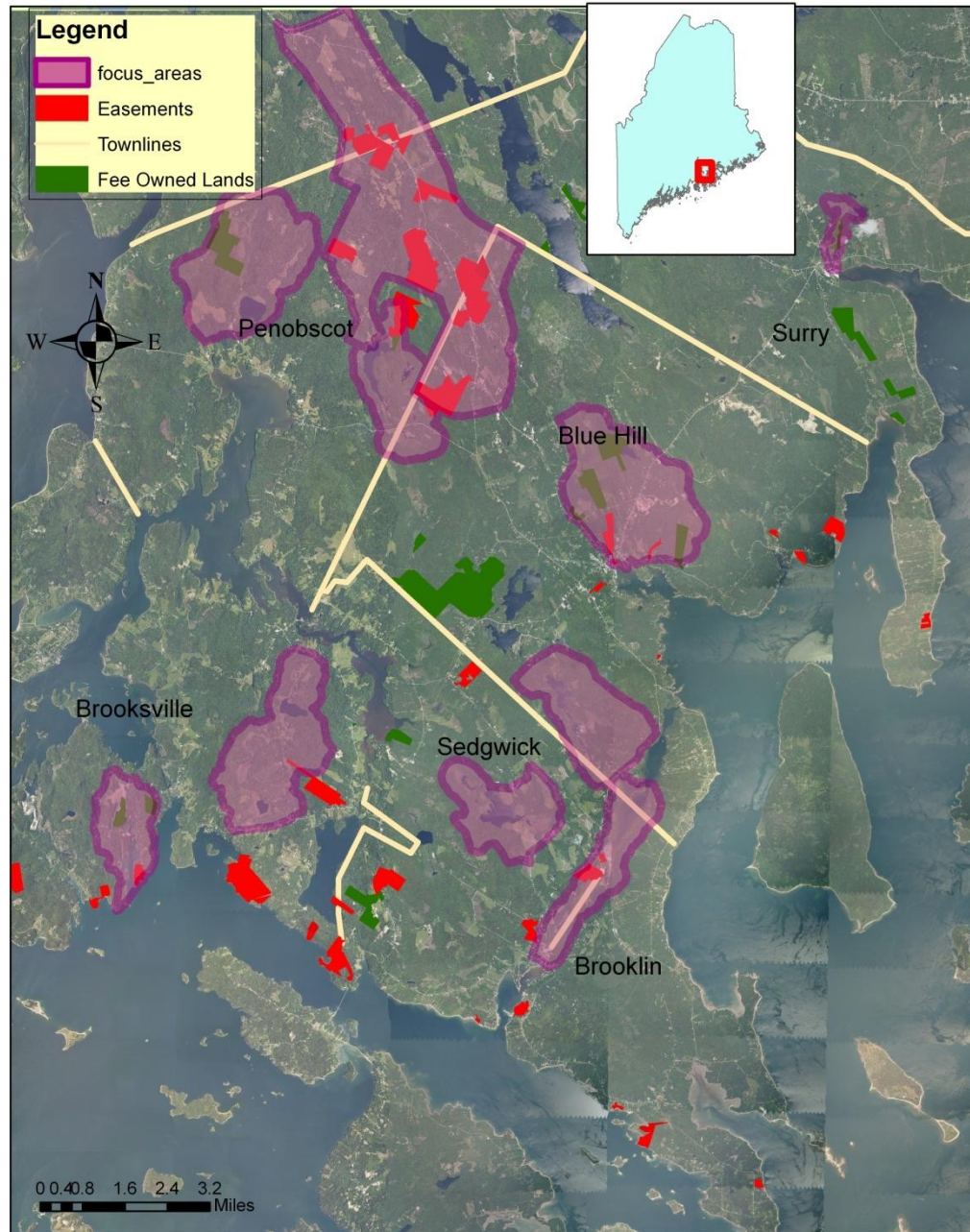


Figure 1
Map of Conservation Lands

Bagaduce River Watershed Project

